



DALI UK-4

www.qxdali.com

Dumper Technical Specification

2m³ / 4 Ton



Main Features

>> Structure

- ◆ The front and rear frames are articulated of 38° steering angle.
- ◆ Ergonomics Canopy of ROPS / FOPS standard.

>> Operation Comfort & Safety

- ◆ 4 wheels driving and SAHR braking.
- ◆ The combination design of parking brake & working brake ensure braking safety.

>> Early Warning & Maintenance

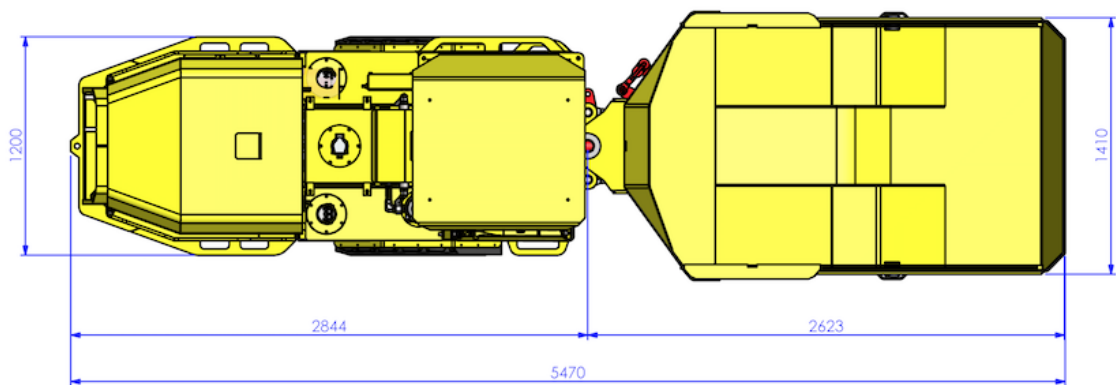
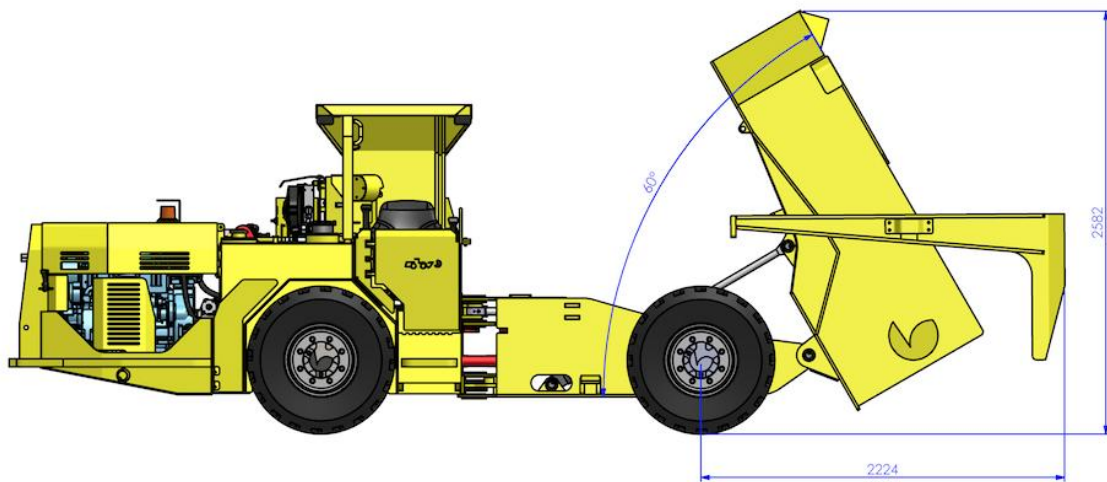
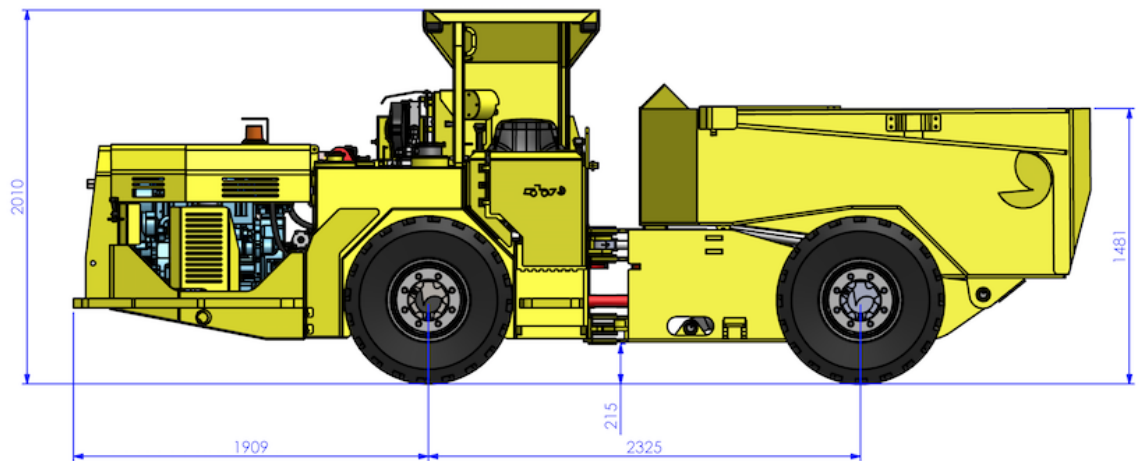
- ◆ Automatic alarm system for oil temperature, oil pressure and electrical system.

>> Energy-saving & Environment Friendly

- ◆ Germany DEUTZ engine with air-cooling, powerful and low-consumption.
- ◆ Catalytic purifier with silencer, which greatly reduces air and noise pollution in working tunnel.



Dimension





Technical Specification

Dimension

Overall Size.....5620*1410*2010mm
 Min Ground Clearance.....215mm
 Max Lift Height.....2582mm
 Wheelbase.....2325mm
 Turning Angle.....38°

Capacity

Standard Bucket.....2m³
 Payload.....4000kg
 Max Traction.....60KN
 Clime Ability(Laden).....20°

Speed.....0~8km/h

Operation Time

Bucket Raising Time.....≤6.8s
 Bucket Lowering Time....≤5s

Weight

Operation Weight.....7250kg
 Laden Weight.....11250kg
 Front Axle(Empty).....4950kg
 Rear axle(Empty).....2300kg
 Front Axle(laden).....5050kg
 Rear Axle(laden).....6200kg

Power Train

Engine

Model.....DEUTZ D914L04 / 58kw
 Emission.....EURO II / Tier 2
 Fuel Tank.....120L
 Air Filter.....Two stage & dry type
 Purifier.....Catalytic with silencer

Transmission

Type.....Hydrostatic
 Pump..... ANFOSS T90

Motor.....SAUER MV23

Transfer Case.....DLWJ-1

Axle

Brand.....DALI
 Model.....PC-15-B F/R
 Type.....Rigid planetary axle

Wheel & Tire

Tire.....10.00-20 PR14 L-4S
 Material.....Nylon

Operator's Compartment

Cab

Floor washable with water to reduce dust
 Low frequency suspension seat with belt

Dashboard & Displays

Critical warnings and alarms Displayed as warning lights
 Instrument Panel Electric gauges
 Instrument Panel Illuminated switches

Brake

SAHR multi-disc wet brake at each wheel. Combination design of parking & working brake.

Electrical



Alternator 55A / 28V

Batteries 2 x 12V

Starter 4kW / 24 V

Driving lights

2 in front 42W, LED lights

2 in rear 24W, LED lights

Optional

- ◆Engine Fire Suppression.
- ◆Remote Control System.
- ◆Flashing beacon